



CELEBRITY FLORA FACT SHEET



Celebrity Cruises introduces *Celebrity Flora*, the first ship of its kind ever to be designed and built specifically with the destination in mind – in this case, the captivating Galapagos Islands. In its creation, Celebrity followed in the footsteps of the brand's revolutionary new ship, *Celebrity Edge*, by designing *Celebrity Flora* in 3-D. This advanced technology lets Celebrity experience every space on board in virtual reality to fine-tune every detail of the design before she's even built. This process allowed Celebrity to create the most state-of-the-art ship to ever sail the Galapagos Islands.

Celebrity Flora marks an evolutionary turning point in the approach to ship design by allowing the destination and its environment to inspire and influence every decision made. From the luxurious all-suites accommodations that incorporate sustainable, natural materials that complement the destination, to the dynamic positioning system that enables the ship to stay on station without the use of anchors to help protect the seas, Celebrity has created a ship that truly differentiates between visiting this incredible corner of the world and experiencing it.

FAST FACTS

5,739 GRT | 333 feet long | 55.7 feet wide
14.7 feet draught | 12 knots, cruising speed
Six passenger decks
Two bow thrusters with 536 horsepower (400 kw) each
100 Guests (double occupancy)

SUITES

Total: 50

DESIGN TEAM

BG Studio International

3deluxe

Wilson Butler Architects

Adriana Hoyos

SHIPYARD

De Hoop Shipyard (Netherlands)

ACCOMMODATIONS

Celebrity Flora also features the brand’s innovative outward-facing design that makes the destination the center of attention to create a definite connection between guests, the ocean, and the stunning islands. By focusing the direction of spaces outward at every opportunity, *Celebrity* virtually erased the boundaries between ship and destination to create a sense of truly being in the destination, instead of just visiting it.

Penthouse Suite..... 5
 Royal Suite 6
 Ultimate & Premium Sky Suite with Infinite Veranda..... 7-8
 Sky Suite with Infinite Veranda 9
 Sky Suite with Veranda 10

OPEN-AIR SPACES

There’s nothing that connects guests to a place better than being outdoors there – breathing the air, seeing the sights, and feeling its spirit in the breezes, in the smells, in the sky above. On *Celebrity Flora*, *Celebrity* created incredible opportunities to be outdoors and be immersed in the Galapagos Islands like never before.

Galapagos Glaming..... 12
 Novurania Yacht Tenders..... 13
 The Marina..... 14
 Sunset Lounge 15
 The Vista 16
 Stargazing Platform..... 17

INDOOR VENUES

Celebrity Flora has an incredible variety of places indoors to observe, unwind, reflect, and celebrate the Galapagos Islands. Every venue will connect guests to the sea and the islands with their unique outward-facing design. The materials used in these spaces are eco-conscious, sustainable, and reminiscent of the islands themselves, which help create an even greater connection to the natural beauty of this unique archipelago.

Darwin’s Cove and Naturalist Center 19
 Discovery Lounge 20
 Observatory 21

DINING VENUES

Celebrity’s dedication to providing guests the best possible dining on board knows no boundaries or borders (just like the innovative spaces on board *Celebrity Flora*). The ship features menus crafted by *Celebrity*’s own Michelin-starred chef, who’s dedicated to creating an authentic dining program. All this means guests will have a culinary journey in the Galapagos like no other.

Seaside Restaurant and Ocean Grill 23

CONTACT US

For Media Inquiries..... 24

ACCOMMODATIONS





There are two Penthouse Suites on *Celebrity Flora*, and they're the largest, most luxurious suites sailing the Galapagos Islands. With up to 1,288 total square feet of indulgent home-away-from-home comfort, these lush havens are the ultimate complement to this extraordinary destination.

Floor-to-ceiling windows look out over the private, spacious veranda and the sea beyond, and there's a telescope to help guests get a closer view of the islands during the day and the stars above at night; step out on the veranda and relax in cozy chaise loungers, while gazing out over the sea—or up at the stars.

The separate bedroom features a king-sized bed, fitted with Celebrity's Cashmere Collection Bedding, facing the floor-to-ceiling windows. There's also a large seating area with a flat-screen TV and comfortable chairs for waking up with a morning coffee or slowing down for a nightcap.

The bathroom offers every modern luxury, including a large spa-like shower, a double vanity, a separate toilet area, and a separate spa tub that faces outward, with one wall of floor-to-ceiling windows.

DESIGNED BY

The Penthouse Suite was developed in collaboration with BG Studio International.

FAST FACTS/FEATURES

- Total Number of Penthouse Suites onboard *Celebrity Flora*: Two (of 50 Total Suites)
- Total Suite Square Footage: Up to 1,288 sq. ft.
 - Veranda Square Footage: Up to 321 sq. ft.
 - Bathroom Square Footage: Up to 196 sq. ft.
- Capacity: Two guests
- Every suite is fitted with plush king-sized cashmere mattresses part of the exclusive Celebrity Cashmere Bedding Collection
 - Each mattress is handcrafted in Italy by Matermoll, a family owned artisanal company that has been creating luxury bedding for more than 60 years
 - Additionally, each mattress is hypoallergenic, eco-friendly, eucalyptus-treated, and made with the highest-grade cashmere
- Every room in this private sanctuary features stunning views with up to 87 linear feet of floor-to-ceiling windows
 - Each window offers a double shade: a blackout shade for complete darkness and a solar shade that filters the sunlight for the perfect mood lighting



The second largest suite on board, the two Royal Suites are modern refuges thoughtfully designed to pamper guests and highlight the destination. With 559 total square feet feature a separate living area, bedroom, and private veranda.

A separate living area creates a cozy space perfect for recharging after a day of discovery in the islands. This area features comfortable furniture, a large flat-screen TV, and floor-to-ceiling windows that look out to the spacious, private veranda and the stunning island vistas. In fact, there are floor-to-ceiling windows throughout the room – yes, even the bathroom.

The bedroom features a king-sized bed with Celebrity's signature Cashmere Collection Bedding; the bed faces a window that overlooks the veranda and the world beyond, so guests have every opportunity to enjoy the views – even while lounging in bed. Connected directly to the bedroom is the bathroom, where guests will find a spacious vanity, a separate toilet area, a spa-like shower, and a separate spa tub that's surrounded by glass with one wall facing the veranda and one facing the great outdoors.

DESIGNED BY

The Royal Suite was developed in collaboration with BG Studio International.

FAST FACTS/FEATURES

- Total Number of Royal Suites onboard *Celebrity Flora*: Two (of 50 Total Suites)
- Total Suite Square Footage: 559 sq. ft.
 - o Veranda Square Footage: 129 sq. ft.
 - o Bathroom Square Footage: 101 sq. ft.
- Capacity: Two guests
- Every suite is fitted with plush king-sized cashmere mattresses part of the exclusive Celebrity Cashmere Bedding Collection
 - o Each mattress is handcrafted in Italy by Matermoll, a family owned artisanal company that has been creating luxury bedding for more than 60 years
 - o Additionally, each mattress is hypoallergenic, eco-friendly, eucalyptus-treated, and made with the highest-grade cashmere
- Every room in this private sanctuary features stunning views with 22 linear feet of floor-to-ceiling windows
 - o Each window offers a double shade: a blackout shade for complete darkness and a solar shade that filters the sunlight for the perfect mood lighting



New to the Galapagos Islands is the Infinite Veranda. A key transformational element, this game-changer virtually blurs the boundary between inside and outside living space and takes the entire room to the water's edge with the touch of a button. This brilliant innovation gives guests luxurious, open-air access to the sea – and the Islands – whenever they wish. With the window closed, the room is one spacious luxurious escape.

The ultimate way to experience a room that invites the outdoors in is in the one-and-only **Ultimate Sky Suite with Infinite Veranda**. A total of 365 square feet makes this the largest suite featuring the Infinite Veranda in the Galapagos Islands. The **Premium Sky Suite with Infinite Veranda** offers all the indulgences of the Ultimate Sky Suite, just in a slightly smaller package – an impressive 337 total square feet.

The modern layout of these rooms offers a glass divider with a coral-like design that separates the bedroom and bathroom into two distinct spaces. The bedroom offers a large flat-screen TV and features a king-sized bed that faces outward to offer amazing views – even while guests are nestled comfortably in the Cashmere Collection Bedding.

The bathroom features a glass-enclosed spa tub and shower that faces the floor-to-ceiling veranda window that creates the feeling of being outdoors. The floors are porcelain tile and the countertops are stone – both elements create a connection to the wonders of nature, which adds to the feeling of being outdoors at any moment.

DESIGNED BY

The Ultimate Sky Suite with Infinite Veranda and Premium Sky Suite with Infinite Veranda were developed in collaboration with BG Studio International.



FAST FACTS/FEATURES

- Total Number of **Ultimate Sky Suite with Infinite Verandas** onboard *Celebrity Flora*:
One (of 50 Total Suites)
 - o Total Suite Square Footage: 365 sq. ft.
 - Veranda Square Footage: 86 sq. ft.
 - Bathroom Square Footage: 54 sq. ft.
 - o Capacity: Two guests
- Total Number of **Premium Sky Suite with Infinite Verandas** onboard *Celebrity Flora*:
Seven (of 50 Total Suites)
 - o Total Suite Square Footage: 337 sq. ft.
 - Veranda Square Footage: 65 sq. ft.
 - Bathroom Square Footage: 51 sq. ft.
 - o Capacity: Two guests
- Every suite is fitted with plush king-sized cashmere mattresses part of the exclusive Celebrity Cashmere Bedding Collection
 - o Each mattress is handcrafted in Italy by Matermoll, a family owned artisanal company that has been creating luxury bedding for more than 60 years
 - o Additionally, each mattress is hypoallergenic, eco-friendly, eucalyptus-treated, and made with the highest-grade cashmere
- Every room in this private sanctuary features stunning views with floor-to-ceiling windows
 - o Each window offers a double shade: a blackout shade for complete darkness and a solar shade that filters the sunlight for the perfect mood lighting



The Sky Suite with Infinite Veranda offers all the unique ability to create an open-air room with the touch of a button for a greater connection to the sea and the islands. With a total of 330 square feet, these rooms offer a modern layout where the bedroom and bathroom are separated by a glass divider featuring a coral-like design.

The bedroom features a king-sized bed with Cashmere Collection Bedding. The bed faces the Infinite Veranda window for stunning views from the moment guests wake to the moment they retire for the evening. There's also a large flat-screen TV and luxurious lounge furniture perfect for unwinding after a day's exploration of the islands.

The bathroom is conveniently located near the entrance to the room, perfect for stepping straight into the glass-enclosed spa shower after a day of snorkeling or hiking the islands. The floors are porcelain tile and the countertops are stone – both natural help create a deeper connection the destination.

DESIGNED BY

The Sky Suite with Infinite Veranda was developed in collaboration with BG Studio International.

FAST FACTS/FEATURES

- Total Number of Sky Suite with Infinite Verandas onboard *Celebrity Flora*: 16 (of 50 Total Suites)
- Total Suite Square Footage: 330 sq. ft.
 - o Veranda Square Footage: 75 sq. ft.
 - o Bathroom Square Footage: 50 sq. ft.
- Capacity: Two guests
- Every suite is fitted with plush king-sized cashmere mattresses part of the exclusive Celebrity Cashmere Bedding Collection
 - o Each mattress is handcrafted in Italy by Matermoll, a family owned artisanal company that has been creating luxury bedding for more than 60 years
 - o Additionally, each mattress is hypoallergenic, eco-friendly, eucalyptus-treated, and made with the highest-grade cashmere
- Every room in this private sanctuary features stunning views with floor-to-ceiling windows



The perfect sanctuary in the Galapagos Islands, Sky Suites offer a total of 330 square feet, including a private, spacious 75-square-foot veranda and a large flat-screen TV. The king-sized bed faces the floor-to-ceiling windows, the veranda, and the glorious Galapagos Islands beyond. The signature Cashmere Collection Bedding invites guests to sink into it.

The bathroom features a large vanity with two faucets, porcelain tile, stone countertops, and a laminated glass panel featuring a coral-like design that floods the room with natural light.

The private veranda is furnished with comfortable lounge furniture and table – perfect for enjoying breakfast al fresco or a nightcap under the stars.

DESIGNED BY

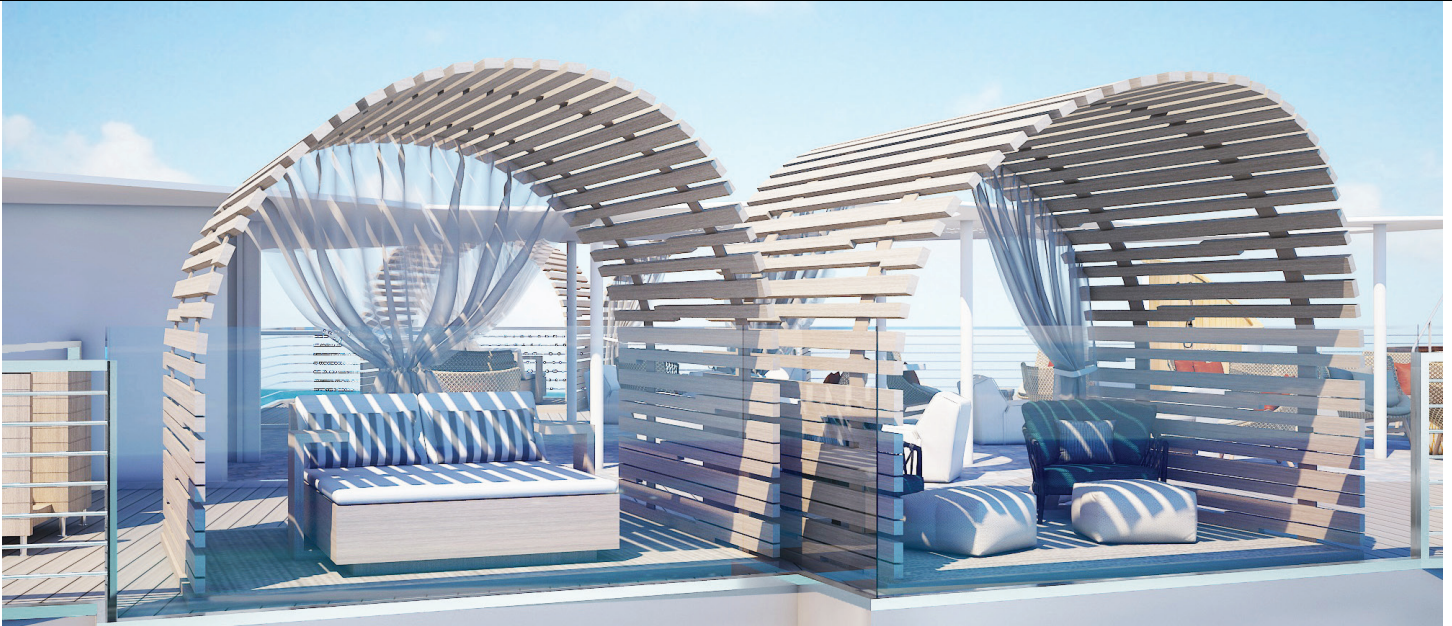
The Sky Suite with Veranda was developed in collaboration with BG Studio International.

FAST FACTS/FEATURES

- Total Number of Sky Suite with Verandas onboard *Celebrity Flora*: 22 (of 50 Total Suites)
- Total Suite Square Footage: 330 sq. ft.
 - o Veranda Square Footage: 75 sq. ft.
 - o Bathroom Square Footage: 50 sq. ft.
- Capacity: Two guests
- Every suite is fitted with plush king-sized cashmere mattresses part of the exclusive Celebrity Cashmere Bedding Collection
 - o Each mattress is handcrafted in Italy by Matermoll, a family owned artisanal company that has been creating luxury bedding for more than 60 years
 - o Additionally, each mattress is hypoallergenic, eco-friendly, eucalyptus-treated, and made with the highest-grade cashmere
- Every room in this private sanctuary features stunning views with floor-to-ceiling windows
 - o Each window offers a double shade: a blackout shade for complete darkness and a solar shade that filters the sunlight for the perfect mood lighting

OPEN-AIR SPACES





On *Celebrity Flora*, guests will have every opportunity to get close to nature – even at night. Introducing Celebrity Cruises’ exclusive Galapagos Glamping experience. A first in the Galapagos Islands, this experience offers all the luxuries of a Celebrity cruise with nostalgic nods to childhood camping experiences.

Galapagos Glamping will have guests unwinding at the top of Celebrity’s luxury yacht in a tent (OK, it’s two lavishly comfortable cabanas, one for sleeping and one for dining – but what else would guests expect from the premiere modern luxury cruise line?). Guests will make s’mores in the great outdoors with nothing but the sky and millions of stars above them, enjoy campfire-inspired cocktails and sip wines selected just for this experience (available nowhere else on board), savor a delicious dinner served exclusively at Celebrity’s Galapagos Glamping experience, and sit with a naturalist who will teach guests about the stars above and the constellations visible in this amazing corner of the world.

At the end of the night, guests can retire to their private cabana where the gentle night breeze and the soothing sounds of the sea will lull them to sleep. Of course, one of the best parts of camping is waking up to the sun breaking over the horizon, and there’s nothing more spectacular than seeing it rise up from the sea. Before the day begins, guests will be served a full breakfast to prepare them for their next day of adventure.

FAST FACTS/FEATURES

- Guest Capacity: Up to four guests per night
- Galapagos Glamping is an overnight experience offered from sunset through sunrise
- The menu, including dinner and specialty cocktails, are exclusive to this experience and available nowhere else on board
- Guests will be able to order room service to their cabanas if they’re craving a late-night snack
- Galapagos Glamping is a first-of-its-kind glamping experience offered in the Galapagos



Celebrity Flora's custom-built Novurania Yacht Tenders will transport guests in comfort and style. They feature stairs with a metal railing that fits flush against the open aft creating a seamless ship to shore transportation system that makes it even easier to go exploring the islands – a first in the Galapagos. Each tender also features a hydraulic ramp that makes wet landings in the islands much more convenient (and less wet). It can also be used as a platform that makes getting on and off for snorkeling much easier.

Other features not found on the standard tender include storage space for snorkel gear and interior seating, in case you're not comfortable sitting on the sides of the tender. They also feature rubber grips on the sides for a comfortable place to hold on while guests explore the islands and interior seating for those not comfortable sitting on the sides of the tender.

FAST FACTS/FEATURES

- *Celebrity Flora* has two tender garages that conveniently hold all six Novurania Yacht Tenders, so they're completely out of the way when not in use
- Novurania Yacht Tender Length: 23 ft. long
- Novurania Yacht Tender Width: 9 ft. 6 in. wide
- Novurania Yacht Tender Capacity: 18 guests



The Marina is a new concept for the Celebrity fleet and was designed specifically with the Galapagos Islands in mind.

Located on Deck 3, The Marina is the primary point of access to the ship – where guests will feel like they’re boarding a high-end yacht for a week of adventure. Large enough to hold 36 guests, it’s at water level. Here guests can step right into the Novurania Yacht Tenders to go exploring the islands, or just hang out and enjoy the views from sea level.

The Marina has everything guests need, whether they’re heading out to explore the islands or returning from a day’s adventures. Novurania Yacht Tenders pull right up onto the platform, so getting in and out is quick and easy. There’s a supply area to house all the equipment guests may need for their day’s activities, including wet suits, fins, masks, snorkels, and life vests. There’s also a rinsing station, complete with plush towels for drying off following a day’s adventure.

DESIGNED BY

The Marina was developed in collaboration with BG Studio International.

FAST FACTS/FEATURES

- The Marina Total Square Footage: 2,042 sq. ft.
- Total Capacity: 36 guests

A staircase leads from The Marina to the Sunset Lounge, another exceptional outdoor space perfect for unwinding and enjoying being a part of the magical islands.

The Sunset Lounge features a plunge pool where guests can slip into for a muscle-soothing soak, shaded areas to escape the rays and sunning places to catch them. This is an intimate outdoor area with cozy, eco-conscious furniture, including chaise lounges and tables that invite guests to sink in and reflect on the day's activities, gaze at the views, and enjoy their favorite beverage or cocktail.

The Sunset Lounge is a great meeting place to gather and get prepared before going down to The Marina, stepping into the Zodiacs, and embarking on a day of discovery.

The natural materials used in the Sunset Lounge create an atmosphere that blends in with the destination and blur the boundaries between being on board and being in the islands.

DESIGNED BY

The Sunset Lounge was developed in collaboration with BG Studio International.

FAST FACTS/FEATURES

- The Sunset Lounge Total Square Footage: 1,450 sq. ft.
- Variety seating, including a chaise lounge, sofas, and lounge chairs
 - o Seating Capacity: 26
- Plunge Pool Dimensions: 9'10"W x 12'10"D x 5'0"H
 - o Plunge Pool Capacity: 8 guests



An inviting space with a relaxed, comfortable, modern vibe.

The Vista is an open-air hideaway and the ultimate place for unwinding: exhale in the jacuzzi, sink into a luxurious, cocoon-style lounger with a favorite book (or drift off for a recharging nap), get comfortable in one of the private cabanas to enjoy cocktails with new friends, or just enjoy some quiet time.

Boasting a South Beach chic lounge area, The Vista creates the perfect spot for chilling in the sun or gazing up at the stars.

DESIGNED BY

The Vista was developed in collaboration with BG Studio International.

FAST FACTS/FEATURES

- The Vista Total Square Footage: 4,810 sq. ft.
 - o The Vista Seating Capacity: 59 guests
- Each of the 4 private cabanas is 9'6" ft. wide, 8'3" ft. in depth, and 8'11" ft. in height
 - o Seating capacity: 2 people



With no ambient light coming from cities, the stars in the sky over the Galapagos Islands are a brilliant sight to see.

There's no better place on *Celebrity Flora* to witness these celestial marvels than Celebrity's first Stargazing platform. Located on Deck 8, this space is designed for looking skyward at night, but during the day it offers unobstructed, panoramic views of the islands.

At night, guests can enjoy guided stargazing tours with Naturalist or guest speakers, or just view the spectacle in awe on their own.

Telescopes and binoculars are provided by Celebrity.

DESIGNED BY

The Stargazing Platform was developed in collaboration with BG Studio International.

FAST FACTS/FEATURES

- The Stargazing Platform Total Square Footage: 320 sq. ft.
 - o The Stargazing Platform Capacity: 30 guests
- Telescopes and binoculars will be provided for guests

INDOOR VENUES



Darwin's Cove is a guest's introduction to the inside world of *Celebrity Flora*. Located on Deck 3, Darwin's Cove houses the Guest Relations area where guests will check in before heading to their suite and where they can go for any questions they may have during their sailing. Guests will also find cold towels, infused waters, and other refreshments here, perfect following a long day of shoreside exploration.

Adjacent to Darwin's Cove is the **Naturalist Center**, where Celebrity's environmental efforts in the Galapagos Islands are displayed. Darwin's Cove also serves as a meeting place for groups before they head out on shore excursions, and a place to interact with crew members, including the Lead Naturalist and the Naturalist team, regarding anything from daily activities to casual conversations.

DESIGNED BY

Darwin's Cove, the Naturalist Center, and the Discovery Lounge were developed in collaboration with BG Studio International.

FAST FACTS/FEATURES

- **Darwin's Cove** Total Square Footage: 2,625 sq. ft.
 - o Darwin's Cove Capacity: 72 guests
- **Naturalist Center** Total Square Footage: 323 sq. ft.
 - o Naturalist Center Capacity: 12 guests



Just above Darwin's Cove, on Deck 4, is the **Discovery Lounge**. Here, guests will enjoy presentations and briefings put on by Celebrity's own Naturalists. Guests will learn all about the activities and excursions they'll have the opportunity to participate in during their cruise. The Naturalists and crew members will guide guests in personalizing their experience in the islands to ensure their vacation is exactly what they'd hoped for.

But, the Discovery Lounge isn't all business; here, guests will find a full bar, a stage for entertainment, and comfortable seating, including sofas and lounge chairs for relaxing. The walls are almost all glass, so stunning views are a part of the ambiance.

DESIGNED BY

Discovery Lounge was developed in collaboration with BG Studio International.

FAST FACTS/FEATURES

- Discovery Lounge Total Square Footage: 2,250 sq. ft.
 - o Discovery Lounge Capacity: 110 guests
 - o Seating Capacity: 110 guests



Want to learn even more about the Galapagos wildlife? The history of the islands? The sea life in the water just below your ship? Head up to the Observatory on deck seven, where guests will find a library dedicated to the Galapagos Islands.

Not only is there a library, but there's an inviting area to cozy up with books they chose from the library. The space is surrounded by floor-to-ceiling windows, so stunning views surround guests and make them feel connected to the environment.

Want to play cards with newfound friends? Tables with comfortable chairs make this the perfect place for that. The Observatory serves many purposes, all of which are designed to enrich the guest experience on board – and in the destination itself.

DESIGNED BY

The Observatory was developed in collaboration with BG Studio International.

FAST FACTS/FEATURES

- The Observatory Total Square Footage: 807 sq. ft.
 - o The Observatory Capacity: 26 guests
- The Observatory is a private sanctuary, featuring stunning views with 85 linear feet of floor-to-ceiling windows

DINING VENUES





With two dining venues and other lite bites, refreshments, and room service available, guests will have every opportunity to satisfy their cravings on *Celebrity Flora*.

The main restaurant, **Seaside Restaurant** on Deck 4, serves breakfast, lunch and dinner. This spacious restaurant features floor-to-ceiling windows throughout, offering stunning vistas to complement the mouthwatering meals they will enjoy here. Celebrity likes to refer to the atmosphere here as upscale casual. The design elements – from the natural stone floor to the sustainable, hard wood chairs (comfortably upholstered, of course) – are all natural materials to highlight the natural beauty of the islands.

The second restaurant on board *Celebrity Flora* is **Ocean Grill**, an outdoor casual dining space that offers panoramic views during the day and stunning, starlit skies at night. Here, there's every opportunity to enjoy both the destination and Celebrity's culinary expertise daily. From grilling up the highest quality, sustainable seafood from the area for lunch to what Celebrity is calling Dinner Under the Stars, Ocean Grill is the envy of any destination restaurant around.

DESIGNED BY

The Seaside Restaurant and Ocean Grill were developed in collaboration with BG Studio International.

FAST FACTS/FEATURES

- **Seaside Restaurant** Total Square Footage: 3,444 sq. ft.
 - o The Seaside Restaurant Seating Capacity: 116 guests
 - o Menu will be reflective of naturalistic surroundings; in addition to Celebrity Signature classics, dishes will focus on local flavors and fresh seafood
- **Ocean Grill** Total Square Footage: 3,714 sq. ft.
 - o Ocean Grill Seating Capacity: 146 guests
 - o Menu will feature fresh, local ingredients and seafood served from outdoor grill

Please visit www.celebritycruisespresscenter.com for any materials needed, such as images, video, logos, ship fact sheets, additional leadership bios, etc.

Journalists are also encouraged to sign up for Celebrity's press center mailing list to receive to-the-minute updates and more exciting news from the brand.

CONTACT US

The Celebrity Cruises Public Relations team can be contacted at the below:

Katherine Hill

AVP, Global Public Relations
Celebrity Cruises
katherinehill@celebrity.com
(305) 539-6127

Nathalie Alberto

Manager, Public Relations
Celebrity Cruises
nalberto@celebrity.com
(305) 539-6721

Adora English

Consultant, Public Relations
Celebrity Cruises
aenglish@celebrity.com
(305) 539-5386

Bradley Norman

Specialist, Public Relations
Celebrity Cruises
bradleynorman@celebrity.com
(305) 539-4413

Judith HoSang

Vice President
DeVries Global
jhosang@devriesglobal.com
(212) 546-8654

Alessandra Carriero

Account Supervisor
DeVries Global
acarriero@devriesglobal.com
(212) 546-8515

Sean Layton

Account Supervisor
DeVries Global
slayton@devriesglobal.com
(212) 546-8556

Alejna Kalavik

Account Executive
DeVries Global
akalavik@devriesglobal.com
(212) 546-8509

Michala Oestereich

Account Coordinator
DeVries Global
moestereich@devriesglobal.com
(212) 546-8586

FOLLOW US

Facebook – [Celebrity Cruises](#)

Twitter – [@celebritycruise](#)

Instagram – [@celebritycruises](#)

YouTube – [Celebrity Cruises](#)